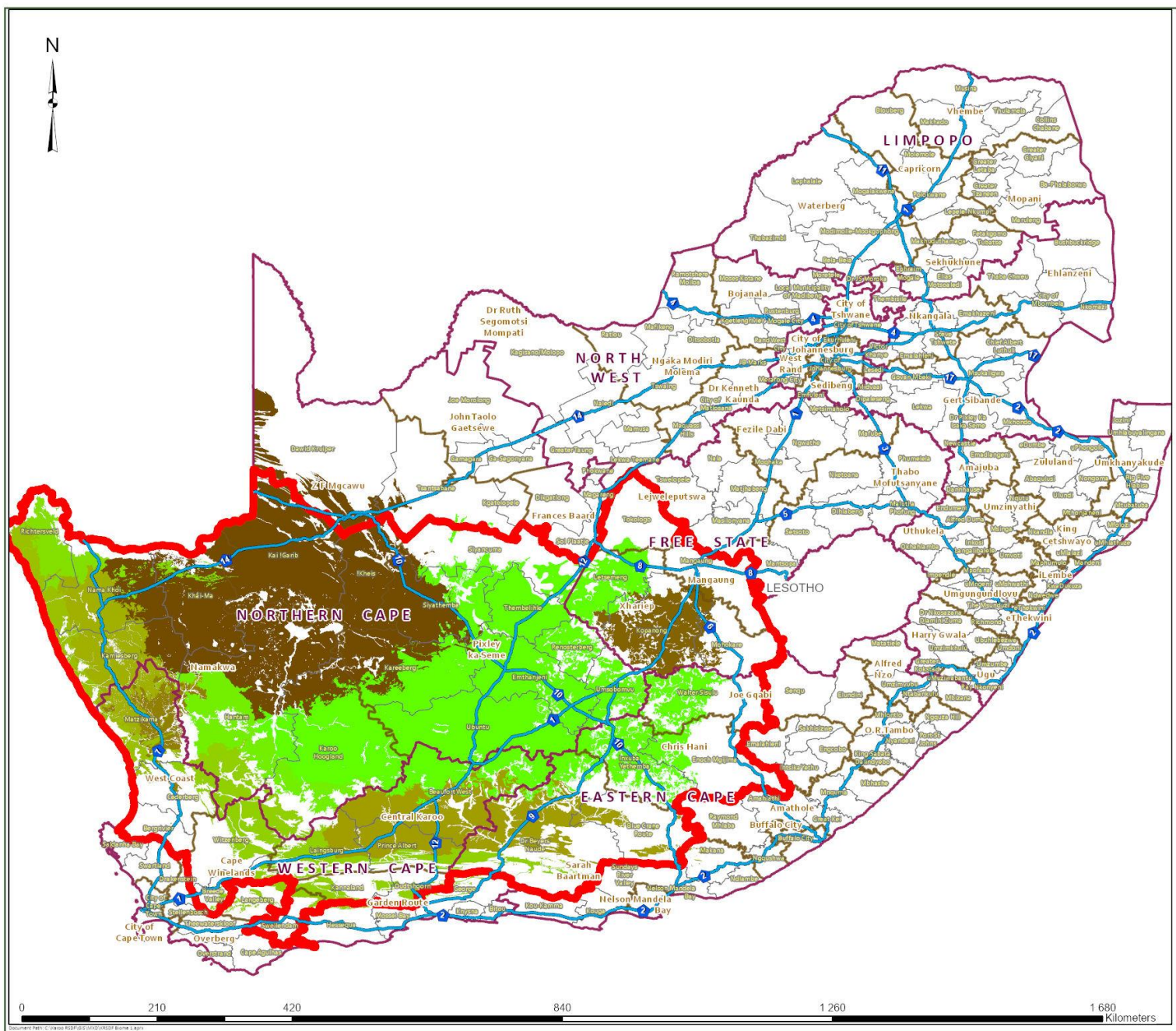


# GREEN EXTRACTIVISM AND THE NEW POLITICS OF DISTRIBUTION IN SOUTH AFRICA

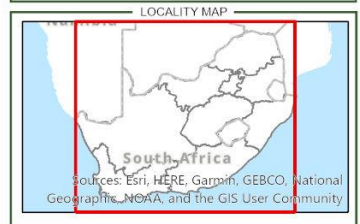
Michela Marcatelli, University of Bologna; Stellenbosch University

IIPPE Annual Conference 2022

Bologna, 7 September



# KAROO REGIONAL SDF



LEGEND

— National Roads

Karoo RSDf Boundary

Karoo RSDf Biome-Karroid

Bioregion

- Bushmanland Bioregion
- Dry Highveld Grassland Bioregion
- Knersvlakte Bioregion
- Lower Karoo Bioregion
- Namaqualand Hardeveld Bioregion
- Namaqualand Sandveld Bioregion
- Rainshadow Valley Karoo Bioregion
- Richtersveld Bioregion
- Trans-Escarpment Succulent Karoo Bioregion
- Upper Karoo Bioregion

Provincial Boundaries

Local Municipalities

PROJECT		
Biome - Karoo/Karroid		
PROJECT NO	DATE	SCALE
SP/UMS/2020/07/23/C	July 2020	1:5 868 924
DRAWING NO	DRAWN BY	CHECKED BY
	RGGoitsemotimo	SMinnie

Disclaimer  
Whilst great care has been taken to procure accurate data, all datasets not created by Branch Spatial Planning and Land Use Management fall outside their custodianship as defined in the SDA Act No 54 of 2003.  
226 Helen Joseph Street, Pretoria, 0001.

agriculture, land reform  
& rural development

Department:  
Agriculture, Land Reform and Rural Development  
REPUBLIC OF SOUTH AFRICA

# THE KAROO REGION

- ‘The Karoo Region is a unique and awe-inspiring ecological, physical, social, cultural, and economic **phenomenon** stretching over four provinces in the South African landscape’ (Karoo RSDF)

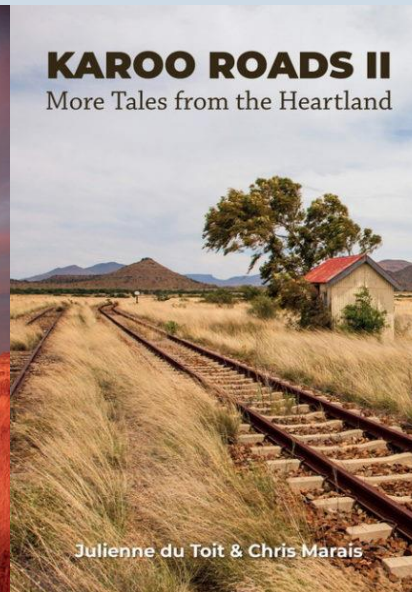
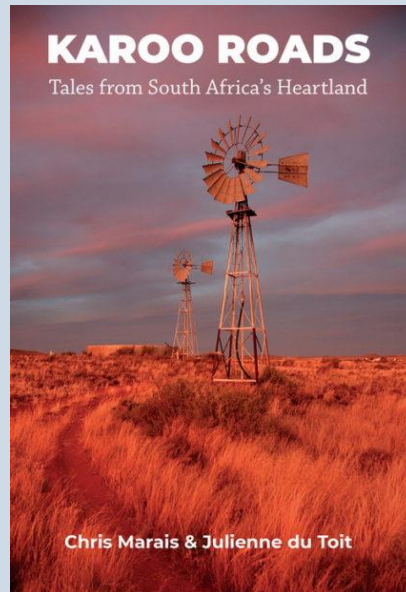








Photo by Stephanie Borchardt

## GREEN EXTRACTIVISM IN THE KAROO

- Renewable energy production (private, utility-scale wind farms and solar plants)
- Prospecting and mining of so-called 'critical' minerals (copper)

## LEGITIMIZATION

- Who is winning and who is losing from these transformations?
- Renewable energy and mining companies: access to 'new' natural resources
- White landowners: rent from renewable energy companies
- Local black and 'coloured' poor and unemployed (ex-farmworkers and -miners): limited employment opportunities





Protests in Copperton, May 2021 (photo by DFA)



## GREEN DISTRIBUTIVE POLITICS

- Mendoza, Greenleaf and Thomas (2021) – drawing on Ferguson (2015) –: ‘processes by which state or capital actors work to build sociopolitical relationships with marginalized populations to generate popular consent [...] fashioned through distributive flows’
- State: development *for* the poor to guarantee electoral support
- Companies: CSR initiatives to prevent local resistance

## COMMUNITY DEVELOPMENT TRUSTS

- Black local 'communities' made minority (5%) shareholders in new investments
- Dividends to be paid into a trust set up by companies and governed by company, independent, and community trustees
- Money to be reinvested and used to fund local development projects
- Major issues: scope and management





THANK YOU